



Always Moving Forward...

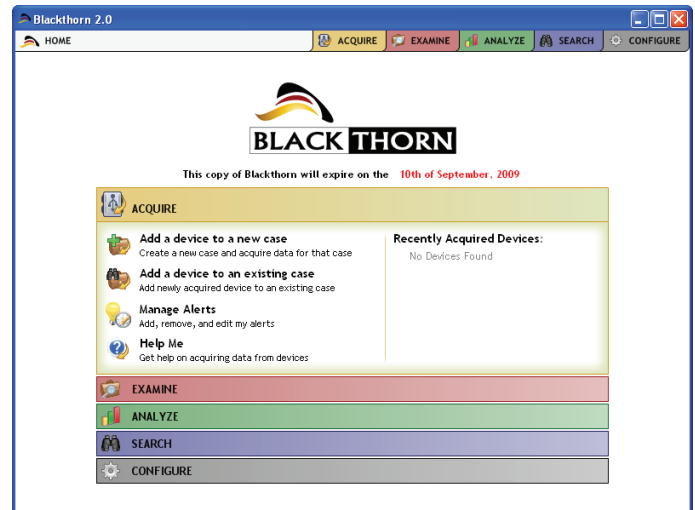
## Blackthorn2

GPS Forensics Made Simple

Blackthorn2 is the premier GPS forensic acquisition, examination and analysis platform designed to give operators in the field, forensics examiners in the lab and intelligence analysts the tool they need when encountering GPS devices. Built as a mission specific application for the law enforcement, military and intelligence communities, Blackthorn2 is the only cross-platform tool that allows users to examine in a forensically sound manner, the content of mainstream GPS devices from the automotive, maritime, aviation, and hand-held sectors

### Blackthorn2's capabilities include:

- Logical acquisitions of all or selected data from Garmin, Magellan, and TomTom Serial and USB GPS devices to include routes, waypoints, tracklogs, trackpoints, address books, favorite locations, paired mobile phone data such as phonebooks, SMS messages, incoming and outgoing calls, and stored documents, pictures, html files and unique device information.
- User Alerts which will visually cue the operator when data being acquired matches previously defined data within the target deck, e.g. a specific phone number or activity in an area of interest.
- MD5 & SHA1 hash of data acquired
- Write Protection of data acquired
- Multiple device acquisitions into one case
- Examine device file structures, file access and creation times and view files in a HEX or text view.
- Web based mapping through Microsoft's Virtual Earth and embedded mapping via Microsoft's MapPoint for field operations without connectivity
- Live Report creation by tagging data, adding map views, and customizing the report layout on the fly.
- Export Reports in HTML, .csv or .pdf format.
- Export date acquired in formats accepted by Google Earth, FalconView, ArcGIS, Raptor, and other applications that are "Curser on Target" compliant.
- Run analytical reports to determine correlations across cases and/or devices by identifying common activity, places, times or other data.
- Simple keyword or data string searches as well as user designed advanced searches using any field and limit data returned by date range, case types, proximity to a specific geographic area.
- Conduct full event frequency analysis across cases and/or devices to help identify patterns of activity or variance in routine, and graph the results in a timeline view or plot them on a map.



Blackthorn2's unique OEA (Operator's, Examiner's, Analyst's) design model allows it to support the key elements of each area and facilitate the transfer of information across disciplines while still having the inherent capability and standards that each user type desires.



*Always Moving Forward...*

## Modular Design

Blackthorn2 is a revolutionary platform designed to evolve with technology and support the OEA model as the need for additional cross-discipline applications continue to grow. The baseline requirements of Operators, Examiners and Analysts are resident in Blackthorn2 as it's capabilities can easily be extended to integrate additional modules for an array of device types such as Mobile Satellite Handsets, Mobile Phones, and/or Wifi Handsets, to name a few. As missions grow and change, and technology continues to advance, it is critical that the base-line or core application be flexible and expandable to meet new challenges.

### Blackthorn Includes:

- Single Blackthorn™ User License
- MapPoint® North America
- Cable Pack
- Soft Carrying Case
- First year Support & Updates

### System Requirements:

#### Software Requirements

- Microsoft .NET Framework 2.0 or above
- Adobe Reader 9.0
- 32 bit Operating System running Windows XP SP3, Windows Server 2003, Windows Vista, or Windows

#### Hardware Requirements

- 1.5 GHz Pentium 4 Processor or above
- 2 GB Ram ( 4 GB recommended)
- 1.5 GB HDD space (more needed to store case information)
- 800x600 minimum screen resolution (1024x768 or higher recommended)



---

### About BerlaCorp

---

Berla Corporation offers years of experience providing technical and analytical solutions, services and training to the law enforcement, military, and intelligence community. BerlaCorp draws from a unique combination of technical, operational and analytical skill sets to create cradle-to-grave operator centric hardware and software solutions. These solutions are designed for ease of use at the tactical level and can produce immediate and actionable intelligence, but also have the innate ability to provide penetrating, in-depth insight when used by intelligence analysts and forensic examiners in strategic domains. Customary to designing equipment to operate in harsh environments, BerlaCorp also has experience providing training and direct mission support to CONUS and OCONUS operations. BerlaCorp is headquartered in Fort Lauderdale, Florida and has offices in the Washington D.C. area.